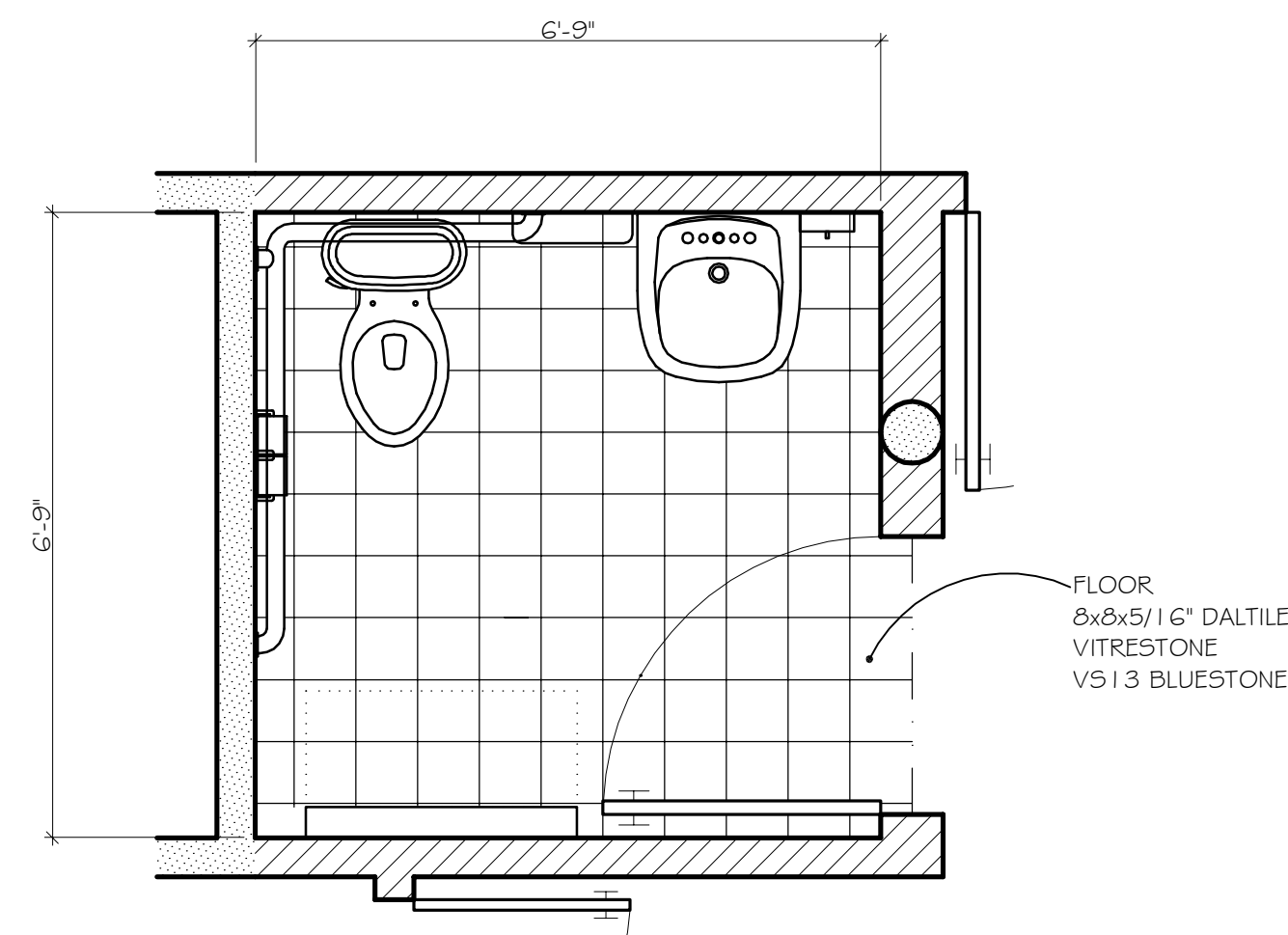


- ITEM LIST
- (A) TOILET  
AMERICAN STANDARD  
TROPIC CADET
  - (B) GRAB BAR  
BOBRICK #B-5837  
54" x 36" x 18" x 1.25"
  - (C) TOILET PAPER HOLDER  
BOBRICK #B-697 SATIN  
RECESSED DOUBLE ROLL
  - (D) HAND DRYER  
BOBRICK #B-750  
RECESSED (VOLTAGE?)
  - (E) LAVATORY  
AMERICAN STANDARD  
MURRO WALL MOUNT
  - (F) MIRROR  
BOBRICK #B-293-1030  
FIXED TILT POSITION, ST.STL.
  - (G) COAT HOOK  
BOBRICK #B-2116  
HEAVY DUTY, ST.STL.
  - (H) DIAPER STATION  
BOBRICK #KB-55WM  
SURFACE MOUNT, ST.STL.
  - (I) SOAP DISPENSER  
BOBRICK #B-4112  
SURFACE MOUNT
  - (O) OTHERS TO FOLLOW

TILE LEGEND

1	4.25 x 4.25 BORDER TILE #5-4449 REPEATING
2	1. KEY LIME
3	2. OCEAN BLUE
4	3. PUMPKIN SPICE
5	4. CORNSILK
	5. SPA BLUE
	6x6 WALL TILE ARTIC WHITE SEMI-GLOSS
	8x8x5/16" DALTILE VITRESTONE V513 BLUESTONE
SADDLE	DISCUSS TRANSITION TO VCT
GROUT	FLOOR: MAPEI #86 CRYSTAL BLUE, SANDED WALLS: MAPEI #00 WHITE



PRELIMINARY



DIMENSIONS SHOWN ARE APPROXIMATE.  
FOR DESIGN PURPOSES ONLY!  
CONTRACTOR TO VERIFY ALL DIMENSIONS.

7	3/23/10	ADDED GROUT COLORS
6	2/4/10	NO CHANGE, REVISION MATCH
5	1/7/10	(2) COLOR NAME CHANGE, 3+4
4	11/25/09	ADDED/MOVED EQUIPMENT
3	11/20/09	ADDED TILE
2	11/19/09	REVISED EQUIPMENT
1	11/11/09	BALPAT-PLANS
No.	Date	Revisions

**Diane Boyer Interiors**  
271 Grove Avenue  
Verona, New Jersey 07044  
Phone: (973) 857-5900 Fax: (973) 857-5915

PROJECT  
**CLIENT RESIDENCE**  
CLIENTVILLE, NEW JERSEY

TITLE  
**ROOM ELEVATIONS**  
**HANDICAP BATHROOM 204**

Date:	11/11/09	Job Number:		Dwg. No.:		Issue:	
Dwg. By:	JDP						
Scale:	AS NOTED						